



PATHFINDER

Inside this issue:

Cantor Glikin's Remarks	2
From Our President	4
Executive Director's Remarks	5
Contributions	14
Calendar	15

Rabbi's Corner -- Finding Faith in an Archaeological Dig

One of the highlights of our amazing Solel trip to Israel was participating in an archaeological dig. Archaeology is the national pastime in Israel. Yet, archaeologists and their discoveries often find themselves at odds with traditional Orthodox Jews. Their findings put into question foundational parts of faith like the accuracy of the Exodus from Egypt, and the details of the life of Abraham. Putting aside these questions of doctrine and history, I think archaeologists have a great deal to teach us about the meaning and living of faith. It is not so much in what they discover. It is in how they work.

1. Attention to detail: As a group, we participated in a dig of ruins from 150 BCE, during the time of the Maccabees. We were digging through the equivalent of an ancient garbage dump. Yet, every shard of pottery; every bone; and every piece of charcoal was placed in a bucket and put aside for analysis. We have no idea what secrets they might unveil. The great architect Mies Van Der Rohe once said, "God is in the details." Archaeology teaches the same truth.

2. Patience: The Maccabean dig has been going on for 12 years. It will continue for at least another decade. By then we might know something new and important. Archaeology does not yield instant gratification. Neither does faith.

3. Separating what is important: After the shards of pottery are hauled up from the underground caves, archaeologists sift through each of them, searching for distinguishing features that can help make sense of daily life. Out of the hundreds of thousands of artifacts, they pick out what helps illustrate a broader truth. The same process happens in the life of our spirits. We sift through our daily experiences, looking for what helps us make sense of our lives and purpose. Faith serves as a filter, helping us discern what is important and what is not.

4. Looking at the big picture: Archaeologists do not gather artifacts simply to record what happened. They gather in order to understand the forces and habits that shape human life.



(Continued on page 7)

Cantor Glikin's Desk-- Women of the Wall – Not for Women Only

My first time at the Western Wall, I had one of those deeply spiritual experiences that we often hear about. A starry-eyed 20-something, I approached the Wall gazing at the monumental ivory bricks. Overwhelmed by the emotional connection I felt to my people's history of longing for Jerusalem and hardly noticing anything around me, I touched the Wall and put a note of personal prayers inside one of the cracks. I left, having fulfilled a dream that many of my ancestors over numerous generations had been unable to realize in their lifetimes.

The next time I was at the Western Wall was during my first Shabbat in Jerusalem, where I was spending the next 11 months as a first-year cantorial student at Hebrew Union College – Jewish Institute of Religion. My husband, the kids, and I went to the Western Wall to celebrate our first Shabbat in Israel. Once on the Western Wall plaza, we were faced with the fact that we would not be able to approach the Wall together, as a family. The kids had to select which one of their parents they would like to be with. Once at the foot of the Wall, I looked around. I was surrounded by women who were praying with tremendous intensity. Yet, I was also struck by the fact that these women were almost absolutely silent. Without a sound, they swayed from side to side, tears streaming down their faces. The emotion they were feeling was reflected in their posture, in their faces, in the way they grasped their prayer-books, but there was absolutely no sound crossing their lips, even though their lips were moving.

At the same time, I was overwhelmed by the loud singing that was coming from the other side of the mechitza, the barrier separating the men from the women. The men's side was buzzing with activity, dancing, and singing. Loud, spirited, energetic singing. The men's singing was filled with passion and zeal. The irony of this moment became immediately apparent to me: there I was, studying to be a cantor, the very person who raises her voice on behalf of her congregation, in the Jewish holy of holies, the Western Wall, and yet I was unable to raise my voice even in personal prayer, let alone in communal prayer. Feeling completely alienated and marginalized, I left the Wall.

After that visit in late June, I did not return to the Western Wall for close to eight months, despite the fact that my school was a short, roughly 10-minute walk from the holy site. I went back in the end of February, at Purim time, when I volunteered to read Megillat Esther, the Book of Esther, with the Women of the Wall. The

Women of the Wall, a group of Reform, Conservative, and Orthodox mostly Israeli, though also American women, come together to celebrate Rosh Chodesh and other holidays together at the Western Wall. As we prepared to read the Book of Esther that morning, we were instructed by the leaders, including Women of the Wall's Chairwoman Anat Hoffman, not to engage should our presence incite criticism. We read the book of Esther while sitting in a circle on the women's side of the mechitza. There were a couple of curious onlookers, but no disturbances otherwise.

Over the next couple of years, after my return back to the US, numerous reports of clashes between the Women of the Wall and the ultra-Orthodox onlookers have made the headlines. Spitting, verbal abuse, chairs thrown from anonymous attackers on the men's side at the Women of the Wall praying audibly on the women's side. Sinat chinam, baseless hatred of Jews against Jews for the crime of wanting to read Torah and pray at our people's holy of holies. Finally, arrests of women by the Israeli police for the "crimes" of wearing a manly tallit (prayer shawl) with blue stripes as opposed to a colorful one, for wearing the tallit draped over one's shoulders, rather than wrapped around the neck like a scarf, for carrying a Torah scroll, for reading Torah at the Wall.

Last month, a new restriction was passed. In a March 14 letter to Anat Hoffman, Jerusalem's new District Police Chief wrote that he met with a deputy attorney general for the government of Israel to go over the rules pertaining to Women of the Wall, which include prohibitions on "...Wrapping yourselves in tallitot, holding a minyan [prayer quorum] of women reciting the Kaddish or Kedusha prayers, and reading from the Torah." The letter also included a threat that women would be arrested and charged with breaking the law for breaking any of the prohibitions above. Arrests are not new for the Women of the Wall, as they have been happening on an almost monthly basis over the past two years. However, the threat to file charges against offending women was new. Also new was the restriction on women to recite the Mourner's Kaddish.

When the Women of the Wall gathered at the Western Wall to celebrate Rosh Chodesh Iyar on April 11, they were 300 strong. Five women were arrested mid-prayer for wearing prayer shawls and singing out loud. This was the first time that singing aloud was included in the causes for police detention. After being held by

the police for questioning, the women were taken to court to receive judgment. Police accused the women of disturbing the public order and requested that the judge ban them from the Western Wall for the following three months. After seeing all evidence, Judge Sharon Larry Bavly stated that there was no cause for arresting the women. In a groundbreaking decision, the judge declared that Women of the Wall were not disturbing the public order with their prayers. She said that the disturbance was created by those publicly opposing the women's prayer, and Women of the Wall should not be blamed for the behavior of others. The women were released immediately, with no conditions.

The historic ruling by Judge Sharon Larry Bavly, marked the second favorable development for egalitarian and pluralistic prayer at the Western Wall in one week. The first was delivered by Natan Sharansky, the chair of Jewish Agency for Israel and a hero due to his famous plight as a refusenik in the former Soviet Union. Last December, Israeli Prime Minister Benjamin Netanyahu appointed Sharansky as a one-man commission to come up with a solution to the growing controversy over women's prayer at the Western Wall. Given Sharansky's significant weight in Israeli and world politics, his appointment to deal with the thorny issue of the Wall signals that Netanyahu is serious in his desire to find a working and lasting solution.

Following extensive private consultations with high-level religious and communal leaders from the major streams of Judaism in the US, Sharansky is ready to present a formal recommendation to Netanyahu. His solution, popular with most leaders in the US, is to create a new prayer space at the Western Wall, where egalitarian and pluralistic prayer would be allowed. "One Western Wall for one Jewish people" with equal access to all, as explained by Sharansky.

The proposed renovation of the Wall is extensive and expensive. It is estimated that it will take two years and \$25 million dollars to bring to life. Specifically, the plan is to expand the Western Wall plaza by raising the South part of the wall, the part currently known as Robinson's Arch. The plan still needs to be approved and there are a number of stumbling blocks that are expected to get in the way, including the Antiquities Authority, which oversees the archaeological aspects of the area, the ultra-Orthodox chief rabbi of the Wall, Shmuel Rabinovitz, as well as a wide range of haredi religious and political leaders, who have insisted on the

status quo and oppose giving legitimacy to non-Orthodox practices at the Wall. And there is the critical question of what happens in the interim, during construction, should it be approved.

Even as the recent developments represent a tremendous step forward for religious pluralism in Israel, it is important to recognize that the struggle is far from over and that the recent developments are a direct result of the pressure that the Israeli government has felt from American Jewry. Our voices truly matter in helping to ensure that Israel becomes a more pluralistic society and one in which we feel at home religiously.

Here is what YOU can do to support the Women of the Wall in their struggle for religious pluralism in Israel:

- On **Rosh Hodesh Sivan, Friday morning, May 10, 8-10 am**, there will be a women-led Torah service at the Daley Center on Randolph St. in support of Women of the Wall, organized by Women of the Wall Chicagoland, a grassroots organization. This gathering is intended to focus public attention on the goals of Women of the Wall and to urge action by members of the Israeli government. **Please join a group of men and women from Solel who will be attending this prayer service to voice our support of pluralism and egalitarianism in Israel.** Please RSVP to the office if you would like to join.
- Stay informed: <http://womenofthewall.org.il>
- Send e-mails to the individuals below telling them that you support the Women of the Wall and pluralistic prayer at the Western Wall:
 - Natan Sharansky, Chairperson, The Jewish Agency for Israel
 - Benjamin Netanyahu, Prime Minister of Israel
 - Tzipi Livni, Kadima Party member of Knesset
 - Shimon Peres, President of Israel
- Pray with the Women of the Wall on your next trip to Israel.

May the dream of "one Western Wall for one Jewish people" become a reality for us and for the future generations!

-Cantor Vicky Glikin

From Our President

These are my last *Pathfinder* remarks as President of Congregation Solel. It has been my great honor to serve on behalf of all of you and to carry on the work of all of the Past Presidents who have helped to bring Congregation Solel to the position of strength and shared success that we enjoy today. I want to take this opportunity to thank Rabbi Moffic, Cantor Glikin, Allan Litwack, Geoff Prass, the Executive Committee/Board of Directors, and each of you for all we have accomplished together.

I hope to see many of you at the May 17th Annual Meeting when it will be my pleasure to transition lay leadership to a diverse group of extraordinary members. Following what I trust will be a positive vote in favor of the proposed officers Slate, I will officially pass the gavel to our next president, Michael Ebner, who will bring his wisdom, experience, and energy to enhance our Solel family.

As many of you know, central to my personal goals for my time as president has been to complete the second phase of the Campaign for Solel. Through this initiative, we asked all of our member families to come together to make our spiritual home a safer, more inviting and more accessible place through a number of capital projects. Many of you came forward and gave meaningful gifts and pledges in support of the Campaign and I have been humbled by your passion and commitment.

- **The congregation has shown broad support for the Campaign for Solel. Thank you.** To date, approximately 50% of our congregation (and the number grows each week) has supported the Campaign for Solel with a gift or pledge.
- **Our newer members have invested in the future of Solel. Thank you.** Approximately 30% of the gifts to Phase 2 have come from members who have joined in the past 5 years, representing approximately 45% of the dollars raised to date through this phase.
- **Our Phase 1 donors have stepped up again. Thank you.** Approximately 30% of those who gave in Phase 1 of the Campaign showed their continued support by contributing to Phase 2 as well.
- **Current and past leadership have set a strong example. Thank you.** 100% of the

Solel Board, Past Presidents, and clergy and senior staff leadership have contributed to the Campaign for Solel.

Very soon you will see the next phase of construction begin on the projects that have been funded by the contributions made to the Campaign for Solel. While this is extremely exciting and represents the future of our congregation that will be made possible by your generosity, **it is important for you to know that the need for additional financial support is still necessary.** We still have a gap to fill in order to allow our congregation to remain debt-free.

As my last request to the congregation as your president, I ask all who have not participated in the Campaign for Solel to join us in this collective effort for our future. I additionally ask those who gave in Phase 1 to consider how you might step up as leaders again. We have achieved great things together over the past several months as we envisioned my question from Erev Rosh Hashanah: "What would you do if you knew you could not fail?" I am confident that our Solel family will come together to successfully complete the Campaign for Solel.

Upon completion of the Phase 2 Project this summer, one of the most dramatic improvements you'll notice is the addition of a single large skylight in the Main Lounge, which will spiritually enhance our access to the sky. Every time my family walks through the synagogue and passes under that beautiful feature, I will think of how proud I am to be included among the Past Presidents of Congregation Solel and of how "the sky is truly the limit" for Pathfinders of all ages for many generations to come.

-Larry Mason

Stock Transfers to Congregation Solel

In order to make stock transfers from your accounts to Congregation Solel, the congregation works with First Midwest Financial Network. Your broker will need the following information to forward stock to our broker:

DTC # 0075
Account # 19324342

As always, your contributions to Congregation Solel are tax deductible to the extent allowed by law. If there are any questions, please call Allan Litwack, Executive Director, at (847) 433-3555, ext 225.

Thank you for your continued support of your beloved Congregation Solel.

From the Desk of the Executive Director

We are quickly moving toward the end of the fiscal year 2013 and the 56th Annual Meeting of the Congregation, so a few short recaps for everyone's consideration. We have seen dramatic changes in the Solel landscape during this year with the inclusion of Cantor Vicky Glikin to our Bima. She has brought great spirituality to our services and a great development of women's programming for our members. Rabbi has led a fantastic journey by our members to Israel and you will hear and see more in this edition of the Pathfinder and at services. Our president, Larry Mason, has led a key team of Solelites in the leadership of Phase 2 of the 21st Century Solel facilities. The required sprinkler system is about half complete as this edition goes to press. The committee is continuing the decision process for the significant changes to the Sanctuary, the Lounge and the Social Hall, with new ceilings, floor coverings, lighting and the sound system. All will have dramatic effects for the coming High Holy Day season.

Speaking of the High Holy Days, September 4th is just around the corner. You will shortly be seeing your Annual Membership Commitment forms in the mail and at www.Solel.org. As you will hear from our Financial Officers at the Annual Meeting on May 17th, we have closely and carefully controlled expenses and maintained the programming of Solel. Dues will have a very slight increase of \$50 per family to allow us to continue our excellent programs. Please submit your forms as soon as possible, as the office is now working on the 2013 High Holy Days forms to be presented in early July, to assure everyone their admission cards and any special needs requests. As always if there are any questions about membership commitments or holiday events please feel free to call me at the congregation office. I look forward to assisting everyone in being part of the Solel family for the holidays and all the events in the planning for next year.

As we conclude this year, thanks to the officers and board for all their hard work and their support of the Congregation administration. Much has been accomplished this year and I look forward to the coming year with great anticipation and working with the new leadership.

Have a safe and happy summer!

Shalom,
Allan



2013 Annual Meeting & Volunteer Appreciation

Join Congregation Solel for a special evening to recognize the efforts of our volunteers and install our new Officers and Directors.

Annual Meeting, Shabbat Dinner and Shabbat Services

Friday, May 17, 2013

5:45 p.m. Annual Meeting

6:45 p.m. Shabbat Dinner

8:00 p.m. Shabbat Service

We will honor our volunteers and install our new Officers and Directors during services.

Congregation Solel
1301 Clavey Road, Highland Park, Illinois 60035
P: (847) 433-3555 • F: (847) 433-3573
soleloffice@solel.org

Mazel Tov on Madeline Shapiro's Bat Mitzvah!



Madeline Shapiro, daughter of Harlan and Robin Shapiro, will become a Bat Mitzvah on May 5, 2013. She is in 7th grade at Elm Place Middle School in Highland Park. Madeline's Torah portion is *B'har/B'chukotai* from the Book of Leviticus. The most important lesson she learned from this Torah portion is that everything one does has either a reward or a punishment. For her Mitzvah project, Madeline volunteered at area shelters and soup kitchens, making and serving meals for those in need. Through this community service project, Madeline experienced the rewards of helping those who are less fortunate. Madeline's favorite hobby is skating, which is hard work but also very rewarding. Madeline has worked hard to prepare for her Bat Mitzvah and she looks forward to sharing this important day with her family and friends.

Rabbi Moffic's Corner

(Continued from page 1)

They work within a framework of principles. Their basic principle is that what people leave behind helps us understand the way they lived. By understanding the way they lived, we better appreciate our own heritage, and we can find lessons that will help us sustain our culture and values. A life of faith also looks at the big picture. We do not engage in prayers or rituals just because some person or some book tells us to do so. We pray and act because we believe we are part of something larger than ourselves. We live within a bigger picture whose artist is God.

5. Faith that it matters: Archaeologists do not attend a special church. They are not generally looking to find proof of God. Yet, they share a faith that the past has meaning. They share a conviction that the remains of the past matter to the people in the present. The archaeologist who led our dig shared his faith with passion. He has brought over two million non-archaeologists—mostly teenagers—on digs throughout Israel. He has devoted his life to helping people connect with the past. This faith helps guide him through the hours of digging and sifting and recording seemingly mundane details.

He knows they matter.

A similar conviction guides people of faith. We share what we love with others. We sacrifice our time, our energy and our resources for something larger than ourselves. We know what we say and do matters, even if we cannot prove it to everyone's satisfaction. Like archaeology, faith does not always show us something new. Rather, it reveals the hidden beauty all around us.

- Rabbi Moffic

Guest Speaker Prof. Rachel Elior: Discovering the Forgotten Women's Voices in Jewish Literature

On May 11 at 9:15 am, Professor Rachel Elior will teach the Torah study class and participate in the Shabbat Morning Minyan Service.

A light buffet style lunch will be served after the service.



Rachel Elior is John and Golda Cohen Professor of Jewish Philosophy and Jewish Mystical Thought at the Hebrew University of Jerusalem. She has been a research fellow and visiting professor at University College London, the University of Amsterdam, Oberlin College, the University of Michigan at Ann Arbor, the Oxford Centre for Hebrew and Jewish Studies, Case Western University, Yeshiva University, Tokyo University, Princeton University, Doshisha University at Kyoto, and the University of Chicago. She is the author of numerous works on Jewish mysticism and Hasidism, three of which are published by the Littman Library: *The Three Temples: On the Emergence of Jewish Mysticism* (2004), and *The Mystical Origins of Hasidism* (2006) and *Jewish Mysticism: The Infinite Expressions of Freedom* (2007). Her book, *Dybbuks and Jewish Women*, has been published by Urim (2008). The recipient of many honors, she was awarded the 2006 Gershom Scholem Prize for the Study of Kabbalah and Jewish Mysticism by the Israel Academy of Sciences and Humanities.

ENVISION SCHOLARS PUTS WAUKEGAN ON THE MAP

SOLELITES HELPED PAVE THE WAY

Josue Pasillas, one of over a dozen students who attended the college Essay Writing Workshop on January 2nd at Congregation Solel, just learned that he is officially a GATES Millennium Scholar! Out of over 54,000 students who applied for this prestigious scholarship, Josue is one of only 1,000 students to receive this honor, arguably the highest honor a graduating high school senior can receive. Courtesy of the GATES Millennium Scholarship Program, Josue will receive a “free ride” to college and graduate school. In addition, he will be connected with some wonderful leadership development/networking opportunities. In existence since 1999, the GATES Millennium Scholarship Program has never recognized a student from Waukegan High School with this incredible award.

In the fall, Josue will attend Pitzer College in Claremont, California, where he says he will continue to be heavily involved in the community and where he will explore politics. Ultimately, however, he wants to return to his hometown.

“Everyone wants me to come back to Waukegan. That is already in my future plans. I have told almost everyone that I will come back. My ultimate goal is to be the mayor of Waukegan,” Josue said.

Two other workshop attendees were Gates Scholarship finalists, a very high honor as they were selected from a pool of 54,000 applications. Roberto Lopez was mentored by Congregant Ellen Rubert and Lorena Aviles was mentored by Congregant Phylis Dolinko.



Congregant Robin Shapiro coaching Josue Pasillas at The Solel-Envision Scholars Essay Writing Workshop in January

Envision Scholars is a Waukegan-based organization dedicated to eliminating the many barriers that stand between high potential Waukegan High School students and their dreams of attending a 4-year college or university. Solel established a partnership with Envision Scholars to help advance the cause, citing education as the major civil rights issue of today. In addition to the essay writing workshop and other tactical initiatives, Solel is assisting in the creation of a long-range strategic plan for Envision Scholars.

There are many ways to get involved and engaged in this effort. Please email Robin Shapiro at robinshapiro2@gmail.com if you are interested.

Yom HaShoah Commemoration at Solel: a Personal Reflection

When Wayne and I entered the synagogue on Saturday evening, April 6, we had no idea what to expect. We're in our early sixties, and like any Jews our age, we've certainly been exposed to the horrors of the Holocaust secondhand for years. Plus, having visited the death camps and traced our families' routes in Central Europe last summer, we'd expanded upon those secondhand accounts. Yet, the Yom HaShoah commemoration led by Cantor Glikin and Rabbi Moffic transported us to that moment in history in memorable ways. It was stirring, yet inspirational. Over the course of the service, the music was soaring, then chilling, plaintive, then discordant,

jarring, then soothing. The poems, artifacts, readings, and personal stories were painful and thought-provoking. The commemoration hit the right balance of helping simulate the evils of the Holocaust and creating a sense of hope for the future. We will never forget.

Thank you, Congregation Solel, for orchestrating this unbelievably powerful service. It gave Yom HaShoah more meaning for us than ever before.

- Wendy Rhodes

Israel through the Eyes of Solel

May 10, 2013

Following Friday evening
Shabbat Services (7:30 pm)

Rabbi Evan Moffic led 29 congregants on a
memorable journey to Israel
(April 9th through April 20th)

Learn about their wonderful journey via their words
and pictures!

- witnessing Women at the Wall
- learning about the convergence of Jewish, Christian, and Islamic traditions in Israel, both historical and contemporary
- Independence Day commemoration at a kibbutz
- worshipping with Jerusalem's Reform Jewish community
- looking at Syria from the Golan Heights
- visiting a secret underground weapons factory dating to the war for independence in 1948
- learning about the contemporary convergence of Jaffa and Tel Aviv
- learning about Yad Vashem
- contemporary struggles involving Israel, the Palestinian Authority, and neighboring nations
- digging in a cave for artifacts with an Israeli archaeologist and more...

Watch for an illustrated report on Solel in Israel
in the June issue!



Shalom Chicago Exhibit Tour
Sunday, May 19 at 1:00 pm
(bus leaving from Solel)

Explore the rich history of Chicago's Jewish community and discover its lasting impact on the city. From Maxwell Street and Lawndale to Hyde Park and suburban Skokie, Jews have helped shape the history of Chicago neighborhoods, religion, industry, labor, art and politics. This exhibition at the Chicago History Museum, presented in collaboration with Spertus, will illustrate the Jewish community's rich history and many contributions to Chicago's growth and development through personal stories, rare artifacts, and engaging media presentations.

**RSVP to the Solel office at
(847) 433-3555 or soleloffic@solel.org by
check or credit card. \$25 fee includes exhibit
entrance and transportation. Tour space is
limited to 45 people.**

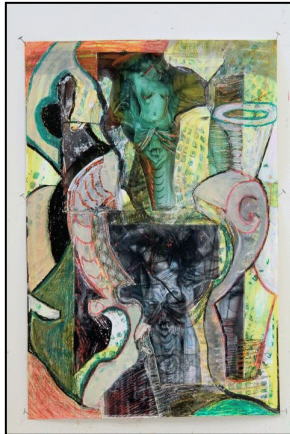
ChicagoHistoryMuseum  spertus

Generous Solel Members Donate Blood to Save Lives

The Spring Blood Drive that occurred on April 7, 2013 brought in well over 60 potential donors resulting in 165 units of blood that will be available to people in need. The Lifesource staff reported that this drive continues to be one of the smoothest run and most successful drives they do outside of high schools. We had lots of our loyal donors who have given regularly for many years and several newer members who were first time donors. Lifesource staff also reported a recent shortage in donors making our success that much more significant. The computerized system now saves so much time that some donors completed the whole process within 30 minutes. Please join us for the Fall Blood Drive this October.

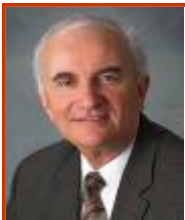
New Art Installation at Solel

Currently on display in the Administrative Wing Lobby are five paper on mixed media works from Annette Turow's Cuba Series. Annette Turow was born in Chicago, IL and has resided here most of her life. She attended the University of Illinois in Champaign-Urbana where she studied Art Education and then completed a Masters degree in Art Education at Stanford University.



Annette has taught in the classroom in public and private schools, the Evanston Art Center, volunteered for Gallery 13 and Art Resources in Teaching and is currently a Docent at the Art Institute of Chicago. She has exhibited in several galleries in Chicago and is currently affiliated with Walter Wickiser Gallery in New York.

- Beth Shadur



SAVE THE DATE!

**October 11-13, 2013
Scholar in Residence**

**Rabbi Emeritus Dov Taylor
will be at Solel.**

SAVE THE DATE: ★
Rosh Chodesh Celebration
for Women
Sunday, June 9 at 7:00 pm

ראש חודש

Rosh Chodesh is a celebration of ourselves, our uniqueness as women, and our relationship with the Divine. Join other women as we celebrate the beginning of the Jewish month of Tamuz. You will see familiar faces and make new friends, grow spiritually and engage in meaning-making. ★

We look forward to seeing you at this wonderful event for women! ★

We Honor our Campaign for Solel Donors

Throughout the course of the entire Campaign for Solel thus far, there has been an outpouring of love and support from members of our Solel family. The following list has been printed to honor all of our current and past members, clergy, and senior staff who saw the need for these important improvements to our spiritual home and stepped forward in support of Solel's future. These individuals have enabled us to create a beautiful new lounge and administrative suite, increase the size of our Endowment, and will allow for additional necessary improvements to Solel including a Highland Park-mandated sprinkler system to improve safety in our congregation, better accessibility, lighting and sound in the Sanctuary, Main Lounge and Social Hall and other key renovations to our *Bima* and other important spaces. These improvements will secure our future for generations to come.

Thank you to all who have participated. You honor us all through your commitment and passion for our shared spiritual home. The *Campaign for Solel* is a project for the whole Solel family.

Anonymous (12)

Gershen and Sally Abraham

Lawrence and Carol Adelman

Paul and Judith Altman

Ronald and Barbara Altman

Bruce and Marcia Balonick

Edwin E. and Judith T. Bederman

Natalie Belrose

Marc and Susan Benjamin

Leon and Karyn Benson

L. H. and Anne Bernbaum

Robert and Joanne Bernstein

Jack and Bobbie Beutel

Charles and Esther Bley

Steven and Pam Bloomberg

Paul and Lisa Blumberg

William and Lillian Bogolub Family Endowment

William and Andrea Bogot

Lila Bondy

Rita Brief

Michael and Julie Bringas

Robert and Belinda Brock

Stanton (z"l) and Judith Brody

David and Laurie Broutman

Roger and Barbara Brown

Steve and Marla Brown

Natalie Caplin

Harold and Linda Chizewer

John J. Cody and Linda L. Muskin

Steven and Loreli Cohn

Kenneth and Marcia Denberg

Sharon Diaz

Steven and Barbara Dibble

Phyllis Dolinko

Rivia Domash (z"l)

Warren and Joan Eagle

Darryl and Michael Ebner

Howard Epstein and Gay Sigel

Ross and Susan Erlebacher

Richard and Judith Fenton

Eugene and Karen Finerman

Steven and Robina Fisher

Richard and Carol Fleisher

Michael and Jean Freed Family Foundation

Jotham and Roberta Friedland

Joel and Stacy Friedland

Coleen and Marc Friedman

Stuart G. Gelfman and Wendy Shorr

Sherman and Miriam Gerber

Cantor Vicky Glikin and Vlad Leybovich

Mark and Claire Golan

Richard and Janet (z"l) Goldberg

Peter and Carol Goldman

Donald A. and Gail Goldstein

Kenneth and Leslie Goldstein

Alan and Nancy Goodman

Stuart and Joanne Goodman

Diane Gordon

James and Donna Gottlieb

Richard and Kara Greenberg

Alan and Carol Greene

Faye Grossman

Michael and Fran Grossman

The Gruenhut Family

Lee and Ellen Gussin

Gary and Ruth Guth

Frank and Elaine Haney

Jack and Greta Heiman

David and Lisa Helfand

Richard and Carol Hillsberg

Gregg and Pamela Hollander

Bruce and Lauren Kaden

Jonathan and Susan Kaden

Louis and Ruth Kahnweiler Family Foundation

Thank You For Your Campaign for Solel Contributions

David and Arline Kallick
David and Sandra Kaminsky
Harvey Kallick
Gladys Kane
Phil Kaplan and Marcia Bogolub
Adam and Lisa Kaplan
Jerry and Arlene Karel
Sheldon and Lee Karon
Nancy and Marty Karp
Martin and B.J. Kass
Steve and Priscilla Kersten
Dennis and Barbara Kessler
Adam and Katherine Keyser
David and Marcy Kirshenbaum
David and Anne Kleinerman
Michael and Carol Kohn
Robert and Alice Kohn
Jeffrey and Holly Krakow
Thomas and Renee Krauss
Nancy Kullman
Scott and Betsy Lassar
Elliot and Frances Lehman
Gary and Judy Leven
Daniel and Deborah Levenson
Harriett Levine
Jonathan and Leslie Levine
Laurence and Mary Levine
Bud Levis (z"l)
Larry (z"l) and Debbie Levis
Roy and Janet Lipner
Allan and Karen Litwack
Phyllis Saxon Loeff
Lowitz Family
Shana Lowitz
David and Lois Marks
Jack and Sheila Marks
Brian Marks
James and Gail Marovitz
Lawrence and Susan Mason
Suzanne Carter Meldman
Rachel and Jason Meltzer
Albert and Gwen Miller
Rabbis Evan and Ari Moffic
Robert D. Nadler & Alice J. Anson
Barbara Niehus
Evelyn Padorr
Brian and Nancy Pastroff
Kenneth and Jennifer Peters
Geoff Prass and Rabbi Alison Abrams
Michael and Kimberly Qualizza

The Sylvia Radov Endowment Fund
Joseph M. Rafson and Cynthia R. Plouche
Diane, Joel and Julia Resnick
Wayne and Wendy Rhodes
Marilyn Richman
David and Marilyn Robbin
Lawrence (z"l) and Rochelle Rochell
Sol and Carolyn Rosen (z"l)
Marcia Rosenbaum
James and Janet Rosenbaum
Harold and Linda Rosenson
James and Sheryl Rubel
Ellen Blumberg Rubert
The Rubinstein Family
Gerald J. Rudman
Edwin and Diana Ruthman
Gary and Lynn Salit
Frances Salpeter
Marlene Samson
William and Suzanne Samuels
Nestor and Beth Sanchez
Robert and Julie Schlossberg
Ken Schmetterer and Nancee Siegel
Daniel J. Schwartz and Charla B. Reinganum
Scott and Joellyn Schwartz
Lewis and Gail Segal
Richard and Caryn Segall
Laurence and Debbie Segil
Arthur Segil
Courtney and Edith Shanken
Harlan and Robin Shapiro
Jonathan and Katharine Shaw
The Shorr Family
Brian and Martha Silberman
Robert and Sandra Silver
Charles and Sondra Sonneborn
Michael and Sharon Stein
Robert and Sue Steiner
Doris Sternberg
Arvey M. Stone and Leslie Brookfield
Jane and Michael Strauss Family Foundation
Bernard and Caryl Susman
Rabbi Dov and Judith Taylor
Ken and Lisa Temkin
Thomas and Suzanne Tolpin
Fred and Brenda Turner
David and Maxine Unger
Barbara Volin
Emily and Kevin Wallace
Michael and Lisa Wasserman

Daniel and Elizabeth Weil
Michael and Joan Weinberg, Jr.
Michael Alan Weinberg and Mary E. Rauen
Arvin and Susan Weindruch
Gerald and Barbara Weiner
Suzanne Weiskopf
Marvin and Rita Weiss
Richard and Susan Wellek
Jerrold and Janet Wolf
Lloyd and Caren Yanis
Burton and Deborah Zirin
David and Tracy Zirin
Joe and Dottie Zoller
Laura Zuckerman

As of April 25, 2013

Check Out These Activities at Congregation Solel



92.1Y Live From NYC
Programs broadcast live via satellite



**OneVoice with Jason Alexander, Daisy Kahn, Rabbi Jennifer Krause,
Daniel Lubetzky, and Ambassador Dennis Ross.**

Thursday, May 16, 7 pm

Join board members and leaders from OneVoice, the grassroots organization dedicated to finding a peaceful, two-state solution to end the Israeli-Palestinian conflict. Hear about their work with youth leaders to prepare their communities for the compromises needed to achieve peace. Could a youth-led mobilization succeed where the leaders have failed?

**Cost: \$10 per person by credit card by phone or login to
www.solel.org or check by mail**

An Evening of American Song- World Premier! **Monday, May 13 at 7:30 pm**

Poetry by Langston Hughes and Wendell Berry

Music by our accompanist extraordinaire, Phil Orem

**Performed by Elizabeth Gray, soprano; Warren Fremling,
baritone and Solel's own Musical Director**

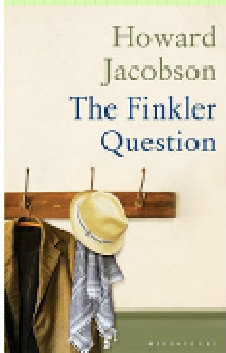
Check Out These Activities at Congregation Solel

SOLEL'S ONE BOOK

The Finkler Question by Howard Jacobson

Sunday, May 5th

Coffee & Nosh-10:00 am
Discussion- 10:30 am



The Finkler Question reflects our Solel tradition of finding new pathways and exploring controversial perspectives.



Simply Shabbat Friday, May 10, 6:00 pm



Join us for an engaging Shabbat evening service full of music, storytelling, and fun for families with young children in our Chapel.

Afterwards join us for an "extended" Oneg Shabbat of delicious family friendly food.



Pray 'n Play Saturday, May 11, 10:30 am

This isn't your ordinary Tot Shabbat!

Future Dates:

June 8

Join other parents with children 0-5 years of age for a fun Shabbat "Gymboree-style" program, followed by a bagel brunch and playtime. Older siblings are welcome to attend!



MAH JONGG NIGHT

May 22
7:00 pm
In the Lounge

All are welcome!

From never played to expert.
Bring your set and 2012 Mah Jongg card (if you have one).
And a snack to share if you desire.

Thank You For Your Contributions

Cantor's Discretionary Fund

Judith and Arnold Fox, in memory of Sarah Krauss
Sue & Carry Ulman, in memory of Missy Alterman

Campaign for Solel

New and additional donations during the past month are identified on Pages 12 & 13.

Children's Garden

Dr. Phyllis Loeff, in memory of Yefim Glikin

Human Needs Fund

Carol and Alan Greene, in honor of Ken and Marcia Denberg's anniversary and in memory of Jerry Greene
Ellen and Lee Gussin, in honor of Joanna's marriage
Betsy and Scott Lassar, in honor of Wendy Rhodes' birthday
Gail and Lewis Segal, in honor of Ken and Marcia Denberg's anniversary
Sharon and Michael Stein, in memory of Joan Goldberg

Music

Susie and Ross Erlebacher, in honor of Wendy Rhodes' birthday
Renee Hochberg, in honor of Wendy Rhodes' birthday
Susan and Larry Mason, in honor of Edie Reese and Phil Goldberger's wedding and Wendy Rhodes' birthday
Beth and Nestor Sanchez, in honor of Wendy Rhodes' birthday
Julie and Robert Schlossberg, in memory of Yefim Glikin

Rabbi's Discretionary Fund

Marcia and Bruce Balonick, in memory of Melvin Balonick
Alexis and David Kanarek, in honor of Emily and Nathan's wedding
Susan and Alvin Richman, in memory of David and Jean Rickles and Harry and Anna Richman
Sue & Carry Ulman, in memory of Stanley Ulman

Tribute Fund

Pamela and Michael Antell, in memory of Hyman Antell
Marcia and Bruce Balonick, in memory of Hugo Melvoin
Linda and Harold Chizewer, in memory of Esther and Jack Chizewer
Marcia and Kenneth Denberg, in memory of Gertrude Farber
David Eichengreen, in memory of Lois Eichengreen
Gail and Donald Goldstein, in memory of Marillyn Tallman
Diane Gordon, in memory of Harry Mednick
Carolyn and Howard Haas, in memory of Helen Werbner and Mari Haas Gelber
Lee and Sheldon Karon, in memory of Betty Karon
Arline and David Kallick, in memory of Jack and Esther Chizewer
Renee and Thomas Krauss, in memory of Alexander Krauss and Richard Hirsch
Suzanne C. Meldman
Amy and Joel Neuman, in honor of Warren Eagle's birthday

Tribute Fund (continued)

Cheri and Gary Robinson, in memory of Anna and Otto Cortesi
Belinda and Bruce Schiff, in memory of Alvin Schiff
Brenda and Fred Turner, in memory of Regina Spiegel
Barbara Volin, in memory of Hugo Melvoin
Susan and Richard Wellek, in memory of Louis Pollack
Jan and Jerry Wolf, in honor of Marge Brock's 90th birthday

As of April 25, 2013

Stock Transfers to Congregation Solel

In order to make stock transfers from your accounts to Congregation Solel, the congregation works with First Midwest Financial Network. Your broker will need the following information to forward stock to our broker:

DTC # 0075
Account # 19324342

As always, your contributions to Congregation Solel are tax deductible to the extent allowed by law. If there are any questions, please call Allan Litwack, Executive Director, at (847) 433-3555, ext 225.

Thank you for your continued support of your beloved Congregation Solel.

Mazel Tov to

John Cody on being honored with a lifetime achievement award from the Chicago Headline Club.

Marcia and Ken Denberg, on their 50th anniversary.

Alexis and David Kanarek, on the engagement of their daughter, Emily Kanarek to Nathan Judas.

Jan and Jerry Wolf and Donna and Roger Dietrich, on the engagement of their children, Rachel Wolf and Jordan Dietrich.

Condolences to...

Judith and Arnie Fox, on the passing of their mother, Sarah H. Krause.

Richard Greenberg, on the passing of his brother, Michael Greenberg.

Kaye and Howard Haas, on the passing of their niece, Mari Haas.

Sherwood Libit, on the passing of his mother, Faye Libit.

Toddy Richman, on the passing of her brother, Hugo Melvoin.

May 2013

Sun	Mon	Tue	Wed	Thu	Fri	Sat
	Kindle Shabbat Candles at dinner or at the following times (CDT): 3.....7:30 pm 10.....7:38 pm 17.....7:45 pm 24.....7:52 pm 31.....7:58 pm					
5 9:45 am Pre-K & Religious School 10 am 5th Grade Mock Wedding 10:00 am One Book Solel	6	7 4:15 pm Religious School Choir Rehearsal 7:30 pm	8 10am Joyce Schragger Book Club	9	10 6 pm Simply Shabbat 7:30 pm Shabbat Service 8:30 pm Israel Trip Recap	11 9:15 am Torah Study: Guest Speaker Prof. Rachel Elior 10:30 am Pray & Play 10:35 am Morning Minyan
12 9:45 am Religious School	13 7:30 pm An Evening of American Song- World Premier Concert	14 Eve of Shavuot 12 pm Lunch & Learn 4:15 pm Religious School Choir Rehearsal 7:30 pm	15 Shavuot (Office Closed)	16 7 pm 92Y Live Broadcast	17 5:45 pm Annual Meeting 6:45 pm Shabbat Dinner 8 pm Shabbat Service	18 9:15 am Torah Study 10:35 am Morning Minyan
19 9:45 am Pre-K & Religious School 10 am Adult Confirmation 1 pm Shalom Chicago Exhibit Tour	20	21 7 pm Just Congregations	22 10 am Joyce Schragger Book Club 7 pm Mah Jongg Night	23	24 7:30 pm Shabbat Service	25 9:15 am Torah Study 10:35 am Morning Minyan
26	27 Memorial Day	28 12pm Lunch & Learn	29	30	31 6:30 pm Shabbat Service	

May Worship Schedule

Friday, May 3

Friday Night Live.....7:30 pm

B'har-B'chukotai, Lev. 25:1-27:34

Saturday, May 4

Torah Study.....9:15 am

Bat Mitzvah.....10:30 am

Morning Minyan.....10:35 am

Friday, May 10

Simply Shabbat6:00 pm

Shabbat Service.....7:30 pm

B'midbar, Num. 1:1-4:20

Saturday, May 11

Torah Study.....9:15 am

Pray and Play.....10:30 am

Morning Minyan.....10:35 am

Friday, May 17

Shabbat Service with Adult & Youth Choir....8:00 pm

Naso, Num. 4:21-7:89

Saturday, May 18

Torah Study.....9:15 am

Morning Minyan.....10:35 am

Friday, May 24

Shabbat Service.....7:30 pm

B'haalot'cha, Num. 8:1-12:16

Saturday, May 25

Torah Study.....9:15 am

Morning Minyan.....10:35 am

Friday, May 31

Shabbat Services.....6:30 pm

Want to inquire more deeply into a passage after the Shabbat service? Find the weekly parashot and commentaries at these links:

Weekly D'var: <http://urj.org/learning/torah/> or <http://www.reformjudaism.org/>

Parashot Summaries: <http://urj.org/learning/torah/summaries/>



Many Paths. One Community

We are a spiritual home that engages our members and community in *prayer, learning, and the pursuit of social justice*. We prize *inclusiveness, innovation, and involvement* in our programs, life cycle events, and leadership. Everyone who walks into our building should feel *inspired, uplifted, and connected*.

Pathfinder

1301 Clavey Road • Highland Park, IL 60035
Phone: (847) 433-3555 • Fax: (847) 433-3573
Rabbi's Study: (847) 433-3708
Religious School: (847) 433-3417
Email: soleloffic@solel.org
Website: www.solel.org



Rabbi: Rabbi Evan Moffic (emoffic@solel.org)
Cantor: Cantor Vicky Glikin (vglikin@solel.org)
Executive Director: Allan Litwack (allan@solel.org)
Director of Education: Geoffrey Prass (geoff@solel.org)
President: Larry Mason (president@solel.org)
Rabbi Emeritus: Rabbi Dov Taylor (rabbit@solel.org)

Pathfinder Deadline for Submissions:
The next Pathfinder will be published June 2013
Please submit material by email on or before May 15, 2013
in order for it to appear in the June Pathfinder.